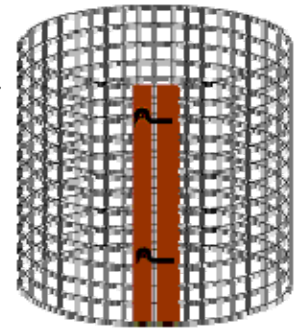


Wire Mesh Compost Bin

The wire mesh compost bin is one of the easiest and least expensive bins to construct. To turn the pile, unwrap the bin and then set it up next to the pile and fork the compost back into the bin.

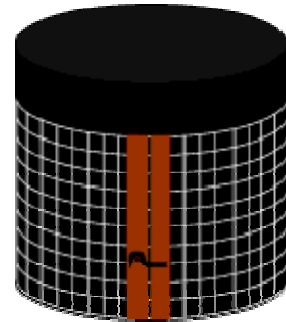


Materials

- At least a 10-ft length of 3-ft-high wire mesh; use 1/2 in. hardware cloth or galvanized wire fencing (the type with *small* holes, 1 in. x 2 in. or 1 in. x 3 in.); chicken wire is not sturdy enough for this bin.
- Two latches (hook-and-eye or whatever you prefer)
- Wood supports (two 3-ft lengths of 1 in. x 2 in. or any scrap wood about this size)

Building the Bin

1. Unroll hardware cloth (or fencing) and trim excess wire. Snip off or fold under any sharp end pieces to make the material easier to handle.
2. Attach wood to the edges of the hardware cloth.
3. Bend hardware cloth into a cylinder.
4. Attach hooks and latches to the wood.



Tip for Dry Climate Composters

In dry climates, cover or line the bin with 6-mil black plastic. Cut a piece of plastic the appropriate length and about 6 inches taller than the bin. Line or wrap the bin with the plastic and fold the extra 6 inches over the top edge. Use clothes pins to secure it in place.

Solana Center



for Environmental Innovation

137 N. El Camino Real, Encinitas, CA 92024
www.solanacenter.org
760-436-7986